

Angled Dump Bin Assembly Guide

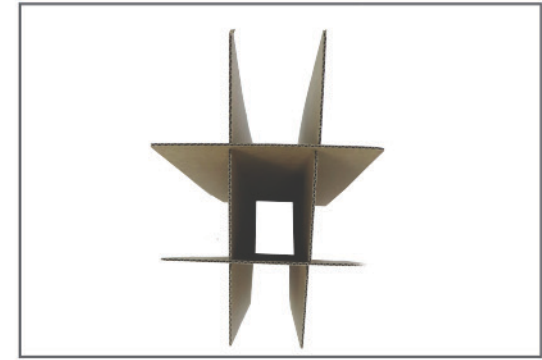
All Box Sizes



Step 1: Slide the short rectangular structure grid into the slot on the shorter side of the Angled Structure Grid.



Step 2: Similarly slide the second angled structure grid into the short rectangular structure grid.



Step 3: Slide the 2 slots of long rectangular structure Grid into the slot on the longer side of the 2 Angled structure grid.



Step 4: Pop out the flattened dump bin and place it with the bottom on the floor.



Step 5: Fold the top flaps all the way in and turn the dump bin over.



Step 6: Fold the bottom flaps at about 90° along the crease lines provided and turn the dump bin back over so that the bottom of the dump bin is now on the floor

Angled Dump Bin Assembly Guide

All Box Sizes



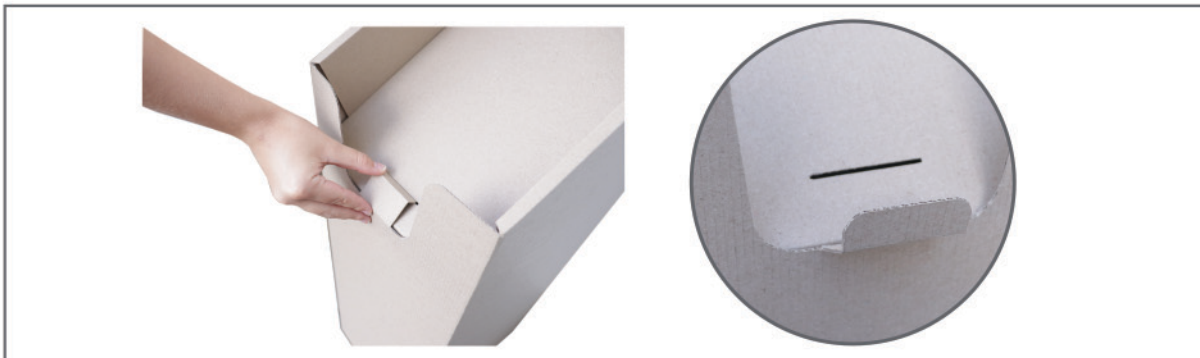
Step 7: Slide the structure grid inside the dump bin in a way that the higher side of the structure grid is at the back.



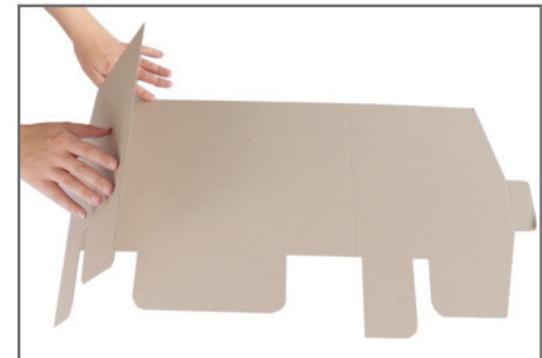
Step 8: Fold the flaps of the shelf at about 90° along the crease lines provided



Step 9: Tuck the bottom flap of the shelf in between the front of the structure grid and the Dump bin. Then slowly slide in the rest of the shelf inside the dump bin and press firmly to ensure the snug fit.



Step 10: If you are inserting the shelf of the open front dump bin, make sure that you pull the small tab on the front of the dump bin out and then insert the side of the shelf with a slot cut out in the front side of the dump bin. Slide the shelf into the dump bin as shown in the previous step and insert the tab in front of the dump bin into the slot on the shelf.



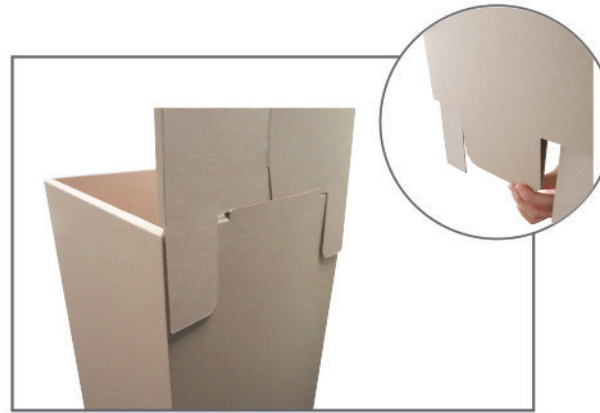
Step 11: If you have a header board then carefully fold the fold along the crease lines.

Angled Dump Bin Assembly Guide

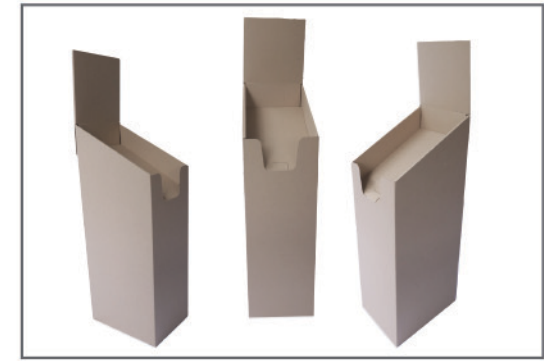
All Box Sizes



Step 12: Tuck the corner flap on one side of the header board into the cutout slot on the other side and press it down until it is flat.



Step 13: Slide the both front and back flap at the center of the header board into the cutout slot at the back of the dump bin while pushing the both side flaps behind the dump bin.



Step 14: You should now have an awesome looking Dump bin.